

£220,000
Asking Price



Kirkley Cliff Road

Kirkley, NR33 0DF

- Multi-level maisonette
- Set in a charming period building
- Rich in original character features
- Stunning sea and coastal views
- High ceilings & generous proportions
- Three spacious double bedrooms
- Large, bright lounge/diner
- Good-sized modern kitchen/breakfast room
- Full of potential to personalise
- Prime location moments from the beach & Kensington gardens





Location

This home is situated in the Heart of an English Coastal Town nestled in the most easterly point of the British Isles. With award-winning sandy beaches and breath-taking Victorian seafront gardens. Explore the Royal Plain Fountains, two piers, and a variety of independent eateries that will tantalise your taste buds. Education is a top priority here, with excellent schools for all ages. Commuting is a breeze with a bus station and train station that offer regular services to Norwich and surrounding areas. Located just 110 miles north-east of London, 38 miles north-east of Ipswich, and 22 miles south-east of Norwich.

Entrance Hall

Entrance door to the front aspect, original period tiles, sash window to the side aspect, fitted shelving and a doorway opening leads through to the hallway.



Hallway

Original tile flooring, radiator and stairs leading to the first floor landing.

Stairs leading to the First Floor Landing

A split landing with fitted carpet, an archway opening with vinyl flooring leads to bedroom 3, the WC, utility space & bathroom and then the stairs up the the second part of the landing has doors opening to a storage cupboard, the lounge/ diner, kitchen/ breakfast room & bedrooms 1-2.

Lounge/ Diner

5.97 max x 4.90 max into bay

Timber frame bay window & a timber frame window to the front aspect (with sea views), x5 radiators and a period fireplace.



Kitchen/ Breakfast Room

3.98 x 3.67

Laminate flooring, timber frame sash window to the side aspect, radiator, gas combi boiler, spacious pantry cupboard, units above & below, laminate work surfaces, inset composite sink & drainer with mixer tap, spaces for an oven, fridge/freezer & washing machine and a built-in extractor fan.

Bedroom 1

4.31 max x 5.99 max into bay

Vinyl flooring, timber frame sash bay window and a radiator.

Bedroom 2

4.28 x 3.96

Fitted carpet, radiator and a timber frame sash window to the rear aspect.

Bedroom 3

3.33 x 3.26

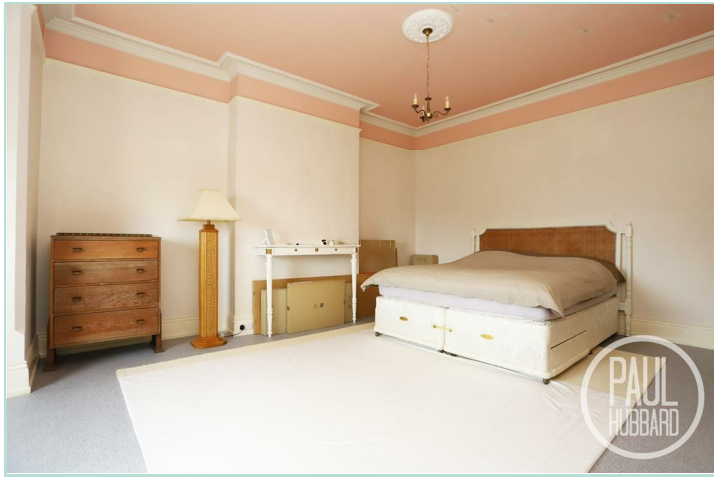
Vinyl flooring, timber frame window to the rear aspect, period fireplace and a radiator.

Bathroom

2.79 x 1.99

Vinyl flooring, timber frame sash window to the rear aspect, radiator, corner bath tub with a mixer tap, an electric shower set into a cubicle enclosure, a wash basin set into a vanity unit with hot & cold taps and tile splash backs.





WC

1.46 x 1.12

Vinyl flooring, timber frame sash window to the side aspect and a toilet.

Utility

1.88 x 0.88

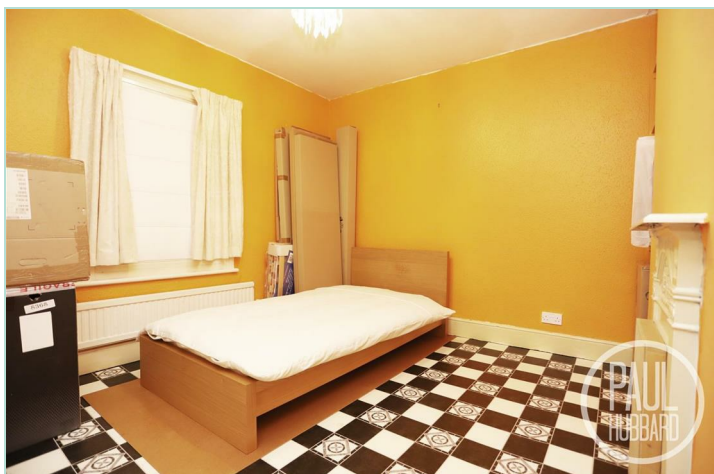
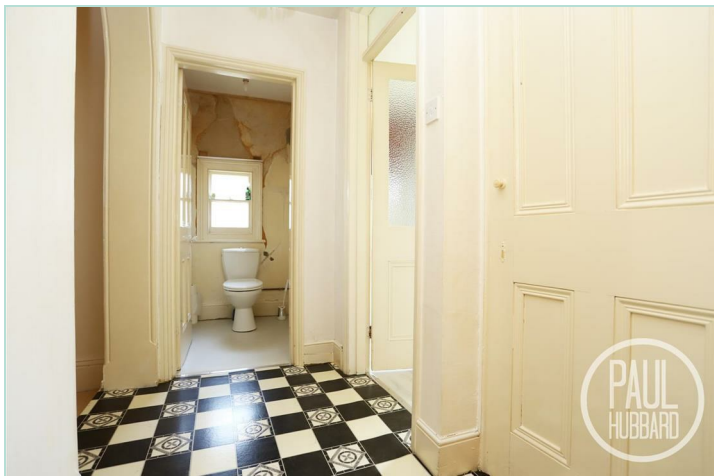
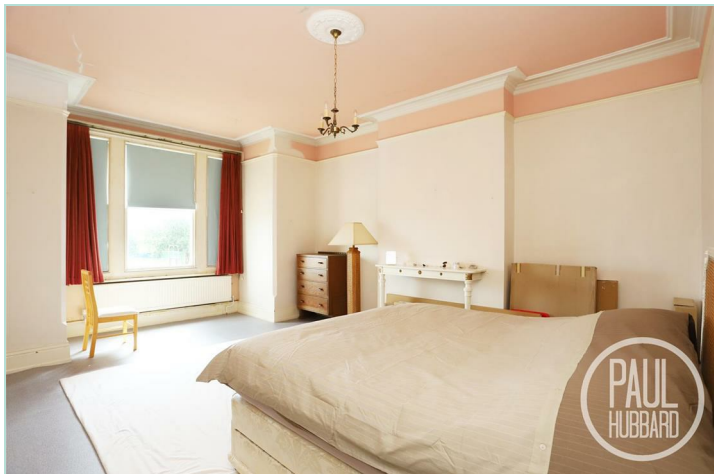
Vinyl flooring, timber frame window to the rear aspect, ceramic sink with hot & cold taps, a storage unit and shelving.

Outside

A gated front entrance opens onto a neatly maintained lawned garden, bordered with decorative plants and shrubs, creating a welcoming first impression. The private entrance to the maisonette is located to the side of the building. The garden continues around to a beautifully kept communal area, featuring a generous lawn, mature trees, and established planting. Gated access to the rear adds both convenience and privacy.

Financial Services

If you would like to know if you can afford this property and how much the monthly repayments would be, Paul Hubbard Estate Agents can offer you recommendations on financial/mortgage advisors, who will search for the best current deals for first time buyers, buy to let investors, upsizers and relocators. Call or email in today to arrange your free, no obligation quote.








Tenure: Share of Freehold
 Council Tax Band: C
 EPC Rating: D
 Local Authority: East Suffolk Council

Energy Efficiency Rating

	Current	Potential
Very energy efficient - lower running costs		
(92 plus) A		
(81-91) B		
(69-80) C		75
(55-68) D	61	
(39-54) E		
(21-38) F		
(1-20) G		
Not energy efficient - higher running costs		

England & Wales

EU Directive
 2002/91/EC
 



Whilst every attempt has been made to ensure the accuracy of the floorplan contained here, measurements of doors, windows, rooms and any other items are approximate and no responsibility is taken for any error, omission or mis-statement. This plan is for illustrative purposes only and should be used as such by any prospective purchaser. The services, systems and appliances shown have not been tested and no guarantee as to their operability or efficiency can be given.
 Made with Metropix ©2025

Paul Hubbard Estate Agents
 178-180 London Road South
 Lowestoft
 Suffolk
 NR33 0BB

Contact Us
www.paulhubbardonline.com
 01502 531218
info@paulhubbardonline.com

Agents Note: Whilst every care has been taken to prepare these sales particulars, they are for guidance purposes only. All measurements are approximate are for general guidance purposes only and whilst every care has been taken to ensure their accuracy, they should not be relied upon and potential buyers are advised to recheck the measurements